

ANIMALS IN THE ARCHIVES

Throughout history, humans have had close connections with animals. Domesticated animals like pets or livestock, and wild animals encountered in their habitat, have all left their mark on Saanich history.

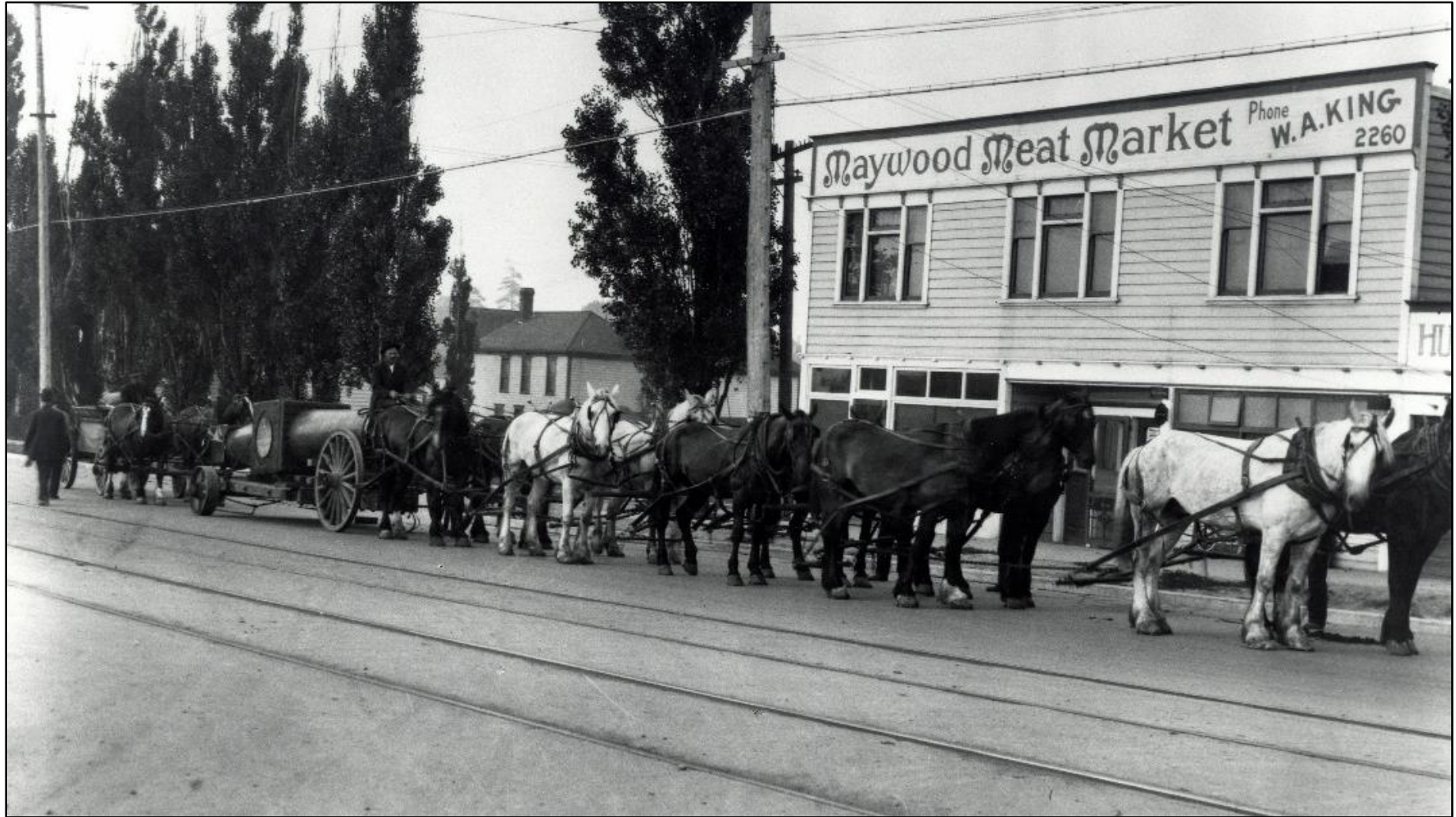
This fun photo gallery takes a look back through 120 years of Saanich history to illustrate how animals have connected us to the land, helped us at work, and enriched our lives.



Mac the dog, ca. 1910 (2016-006-014)

EXHIBIT BY SAANICH ARCHIVES

ANIMALS AT WORK

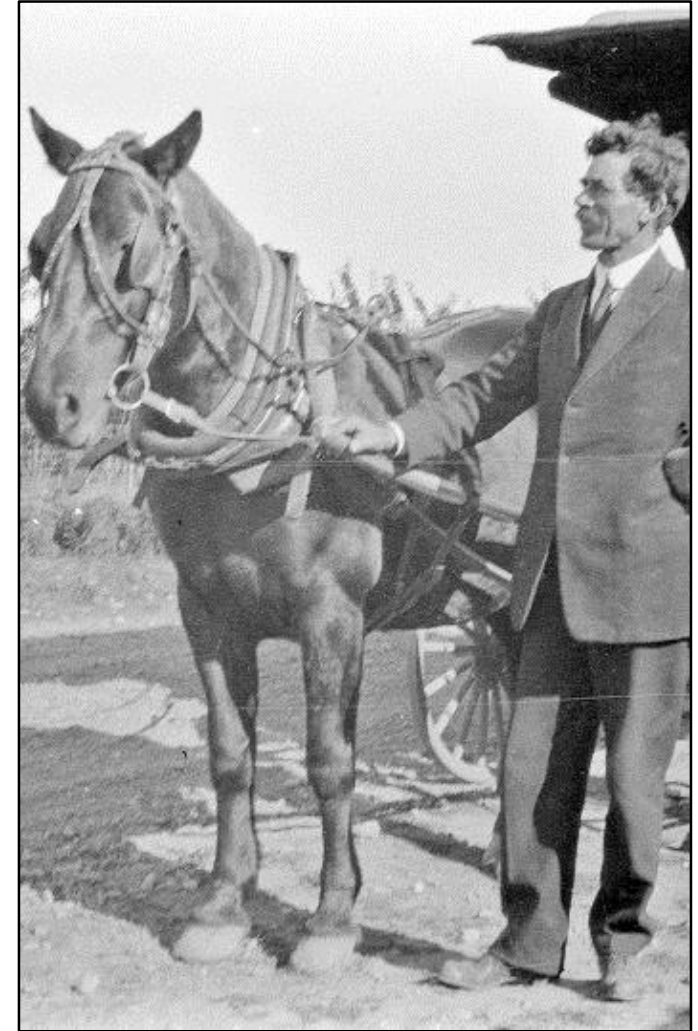


Horses stopped in front of Maywood Meat Market while hauling the polar axis of the telescope to the Dominion Astrophysical Observatory, 1916 (1993-001-001)

ANIMALS AT WORK



Mileva Todd on horse-drawn hay rake, 1910s (2007-051-053)



G.F. Watson with vegetable delivery horse in front of his house, 1910s (2014-008-112)

ANIMALS AT WORK



*Muggins the Red Cross dog with an injured soldier at Esquimalt
Military Convalescent Hospital, 1918 or 1919 (2015-028-009)*

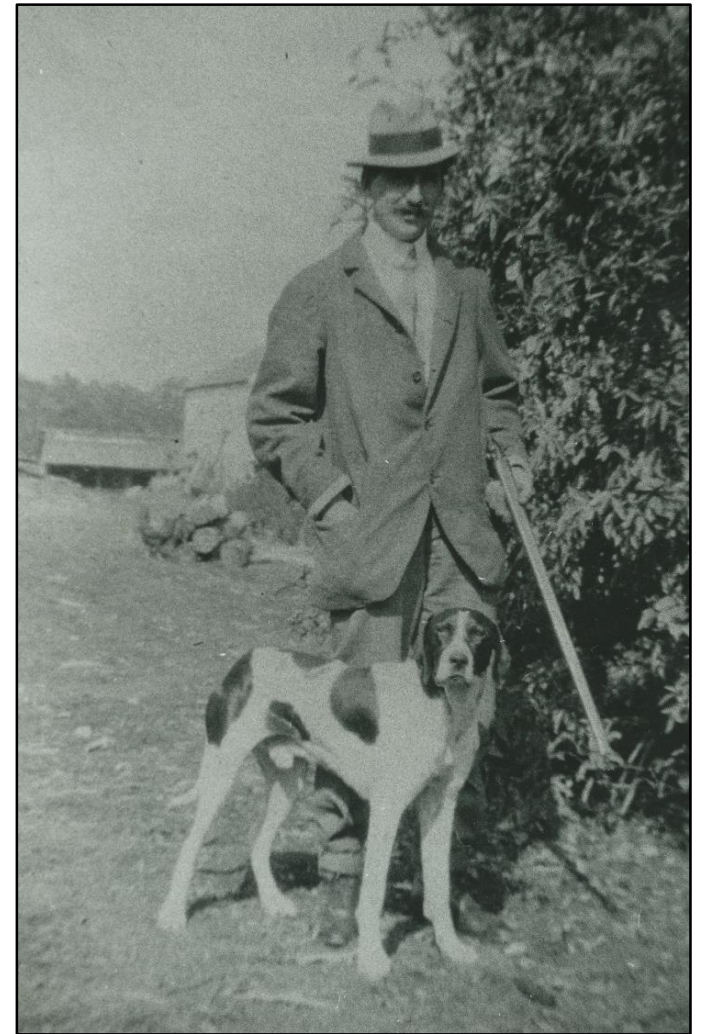


Bob Roach and cat mascot, 1941 (2017-027-153)

ANIMALS AT WORK

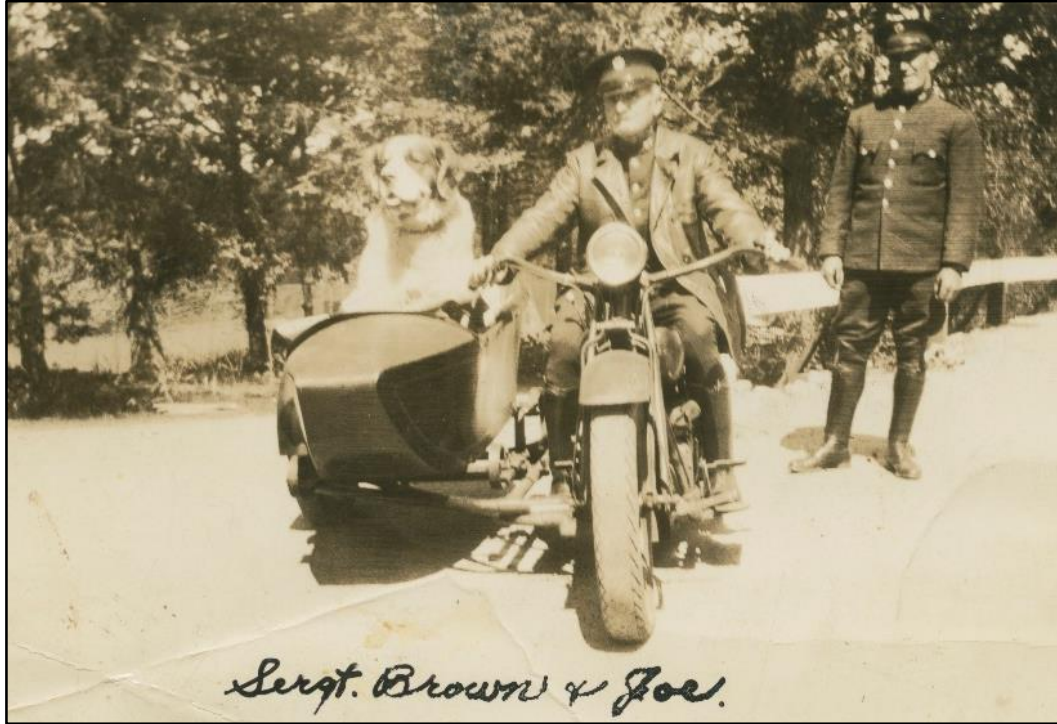


Snow ploughing with horses, 1916 (1980-015-263)

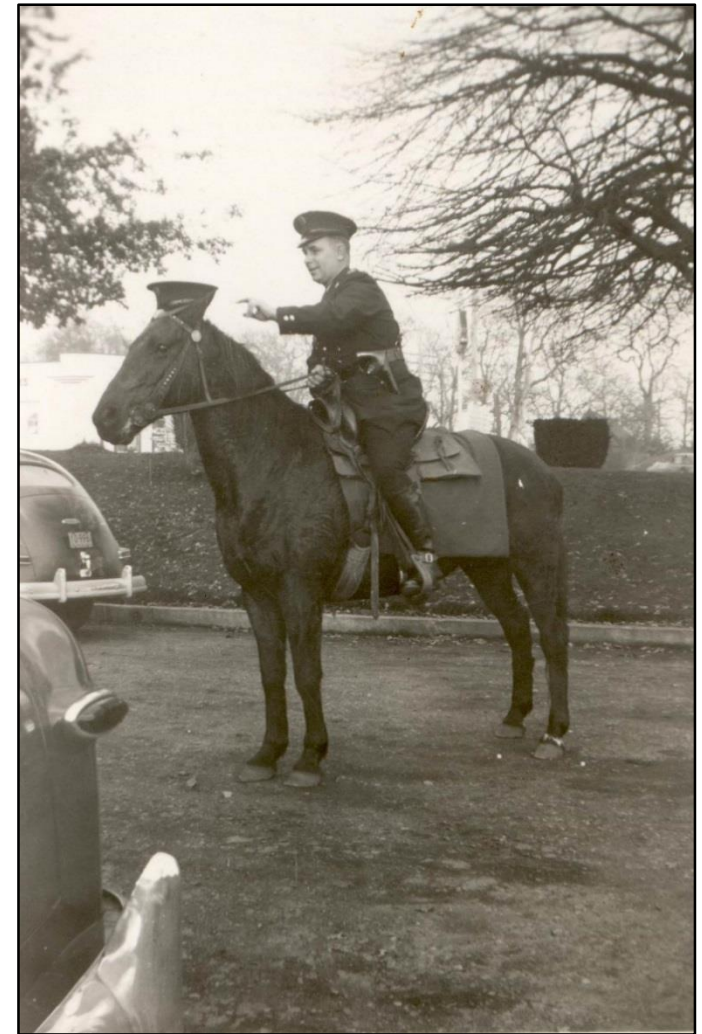


Man with hunting dog, early 1900s (2011-024-038)

ANIMALS AT WORK



Saanich Police Sergeant Brown with Joe the dog, Josiah Bull in the background, 1936 (1981-025-001)



Ed Anderson on police horse. 1936 (1981-025-005)

ANIMALS AT WORK



Saanich Police Dog Section, Jim White with Rex and G. Barr with Prince, 1967 (1983-003-014)



Police officers with dogs, before 1985 (1989-026-581)

ANIMALS AT WORK



George McMorran and Ponto packed for hunting trip, 1910s (1989-008-105)



Graft Knight, George McMorran, and Ponto after pheasant hunt, 1910s (1989-008-139)

ANIMALS AT PLAY



Cat on chair outside 2936 Austin Ave., Robert Charles Squair standing behind, 1940 (2018-024-028)

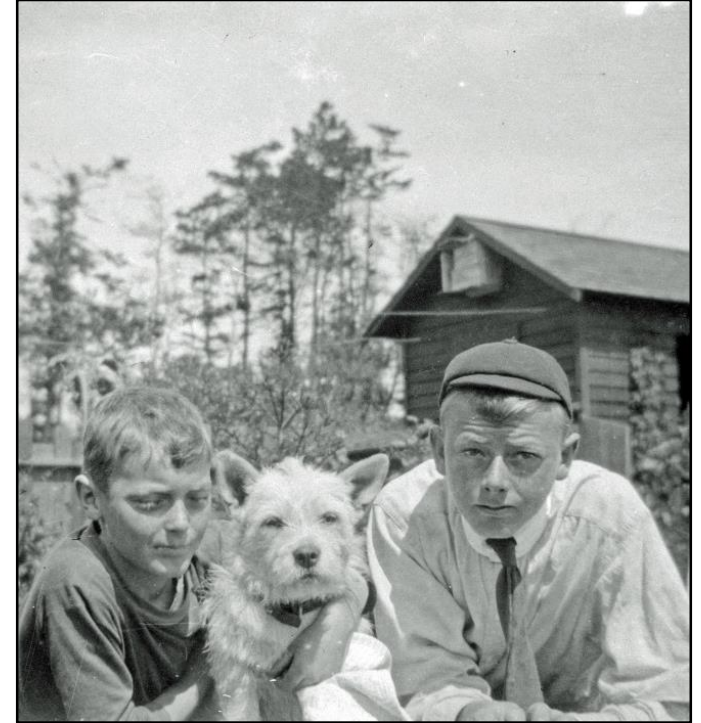


Ted Stone playing with a dog, 1930 (2007-196-150)

ANIMALS AT PLAY



Mena and Leslie Underwood with dog Skippy, ca. 1950 (2017-027-366)



Patrick and Henry Hope with their dog Mac at the family home on Newport Avenue in Oak Bay, ca. 1914 (2016-018-005)

ANIMALS AT PLAY



Beatrice Hadfield Girling in rowboat with dog, ca. 1920 (2008-025-005)

EXHIBIT BY SAANICH ARCHIVES

ANIMAL COMPANIONS



Dorothy Poulton with Kate the horse, ca. 1910s (2007-051-022)



*WWI soldiers and dog outside tent,
ca. 1914-1918 (2017-026-040)*

ANIMAL COMPANIONS



Barbara Hope sitting with dog and cat, ca. 1910 (2010-070-025)



*Boy holding cat and dog, photograph
by Annie Girling (2008-025-222)*

ANIMAL COMPANIONS



Molly Filmer and Thumper, 1978 (2002-002-016)



Portrait of a woman and dog, photograph by Annie Girling, ca. 1900 (2008-025-788)

ANIMAL COMPANIONS



Elizabeth and Henry King with pets, 1911 (2011-024-290)



*Group of men on porch with dog, early 1900s
(2017-014-171)*

ANIMAL COMPANIONS



Janet Andrew Little feeding dog called Rob Roy, after 1912 (2007-058-001)



Lew Moore and cat on steps, 1929 (2018-004-017)

ANIMAL COMPANIONS

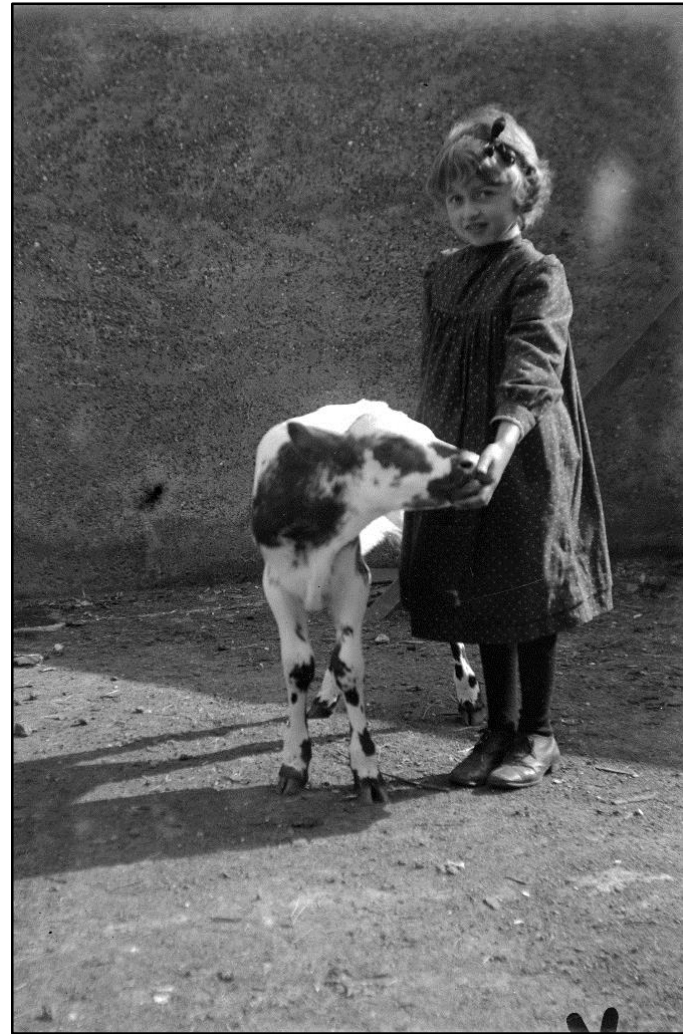


10 year old Charles Aitkens with dog Max, ca. 1913 ((2016-017-152)

ANIMALS ON THE FARM



Dawson child with lamb, ca. 1915 (2011-024-801)



*Portrait of Alice Mary Girling with calf,
ca. 1906 (2008-025-867)*

ANIMALS ON THE FARM

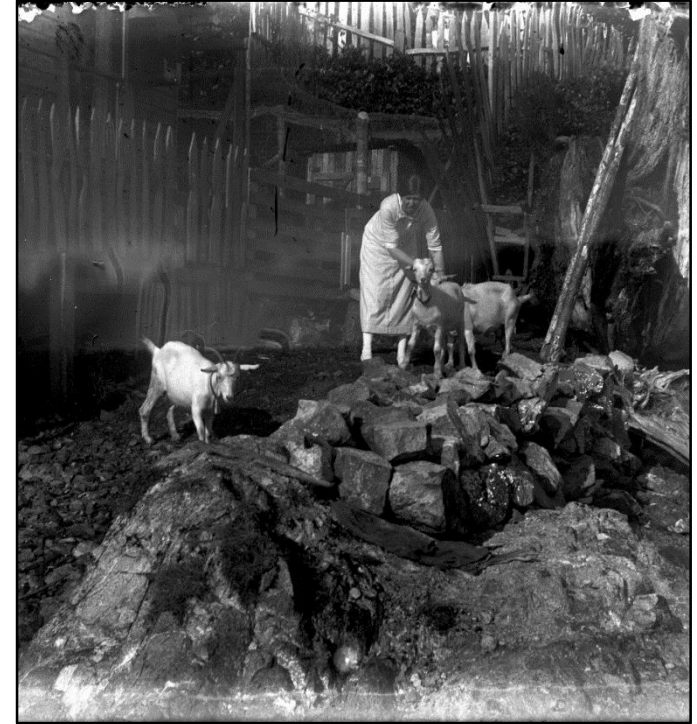


Cows standing at gate, photograph by Annie Girling, after 1912 (2008-025-624)

ANIMALS ON THE FARM



Dawson children with pigs, ca. 1919 (2011-024-426)



Woman tending goats, photograph by Annie Girling (2008-025-082)

ANIMALS ON THE FARM

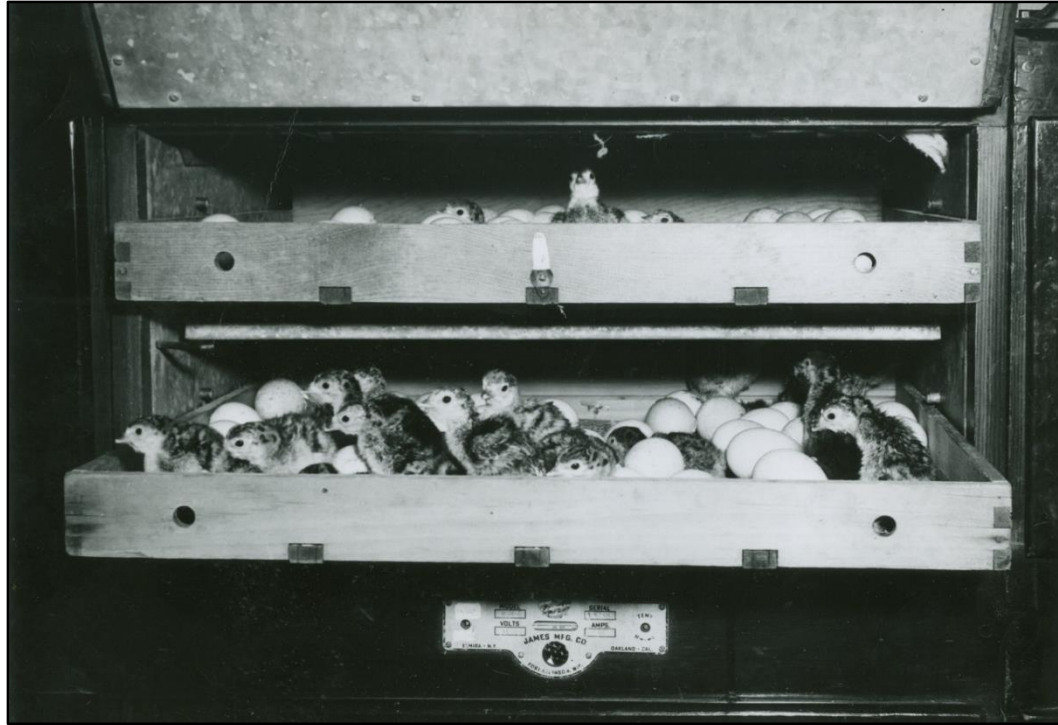


*Alice Mary Girling with geese on Ralph Street near Swan Lake, ca.
1912-1913 (2008-025-402)*



*Portrait of Alice Mary Girling holding chick, ca.
1912-1913 (2008-025-011)*

ANIMALS ON THE FARM



Chicks in hatchery, ca. 1950 (2009-043-019)



*Mrs. Martin Mallet and Mrs. Hill with baby chicks,
after 1910 (1995-002-001)*

ANIMALS ON THE FARM



Boy with prize-winning rooster, ca. 1910s (2008-025-158)

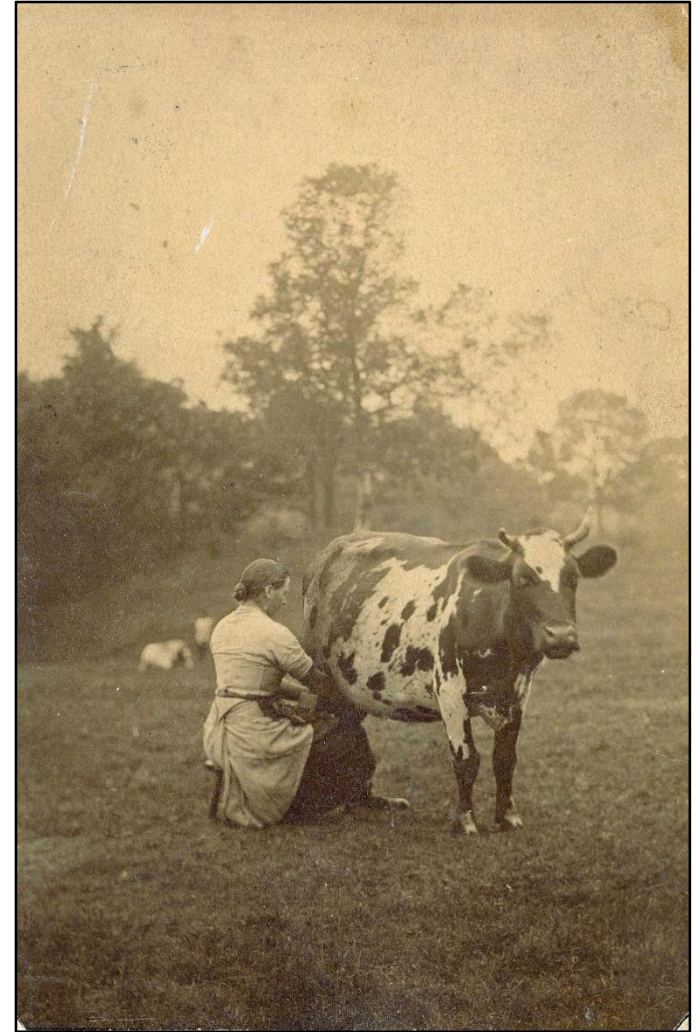


Ken Harrop with prize sheep, Glendinning Farm, 1907 (1981-019-017)

ANIMALS ON THE FARM



William Richards' dairy barn, Ruby Road, 1930s (1981-005-010)



Woman with dairy cow, near Swan Lake, early 1900s (1998-002-001)

ANIMALS IN THE WILD



Seagulls in flight, photograph by Annie Girling, ca. 1910s (2008-025-160)

ANIMALS IN THE WILD



Bear on side of road with cars stopped to watch, photograph by Annie Girling, ca. 1941 (2008-025-063)



Bear behind car on side of the road, photograph by Annie Girling, ca. 1941 (2008-025-454)

ANIMALS IN THE WILD



Ducks on pond at McMorran's Resort Motel, 1955 (1989-008-140)



*Nature study of butterfly on flower, by Annie Girling
(2008-025-860)*

ANIMALS IN THE ARCHIVES

For more virtual exhibits about the history of Saanich
visit: saanich.ca/archives



Group of children holding animals, ca. 1920s (2013-014-189)

EXHIBIT BY SAANICH ARCHIVES